

Acoustic Cabinet Fans

with

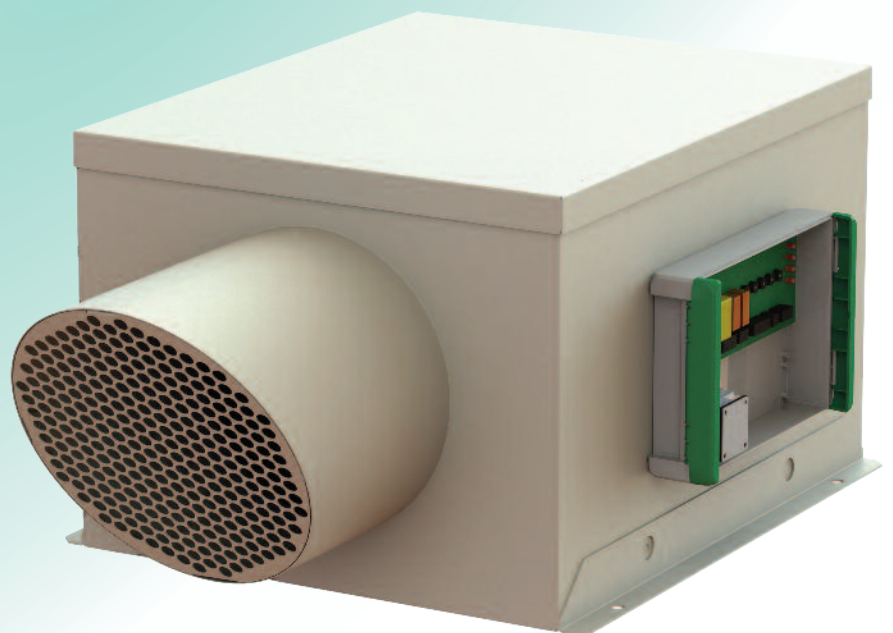
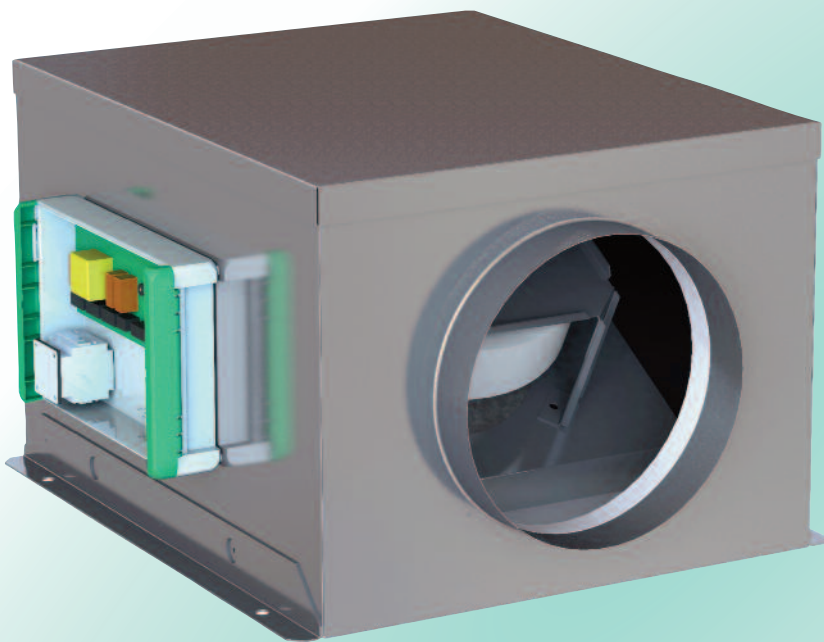
EC Motors

Single Fan Models

Plant & Roof



*ventilation
systems*



Single Fan Models - 0.01 m³/sec to 3.55 m³/sec - EC Motors - Low SFPs

Features and Benefits

Acoustic Cabinet Fans

- Single fans
- ErP compliant 2009/125/EC
- EC fans to suit L2
- ACFS - plant models
- RMS - roof mounted models

Low Energy EC Fans

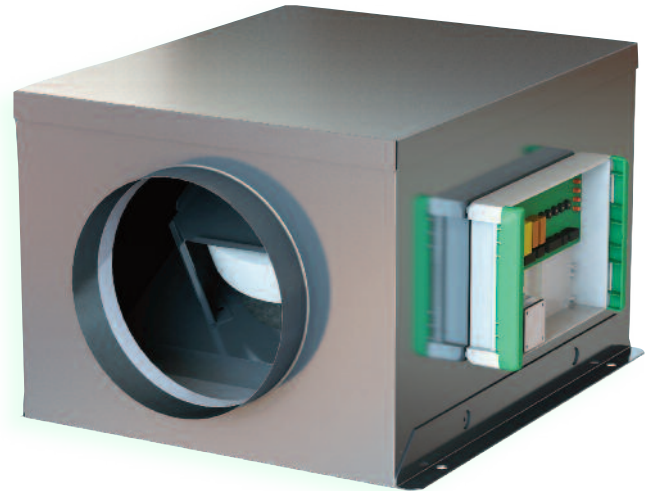
- Energy efficient direct drive fans
- Low SFP to help achieve

L2 Regulations

- Constant pressure controller available

Flexible design - to suit your application

- Units are constructed from galvanised steel 0.9mm to 1.2 mm depending on the model
- Roof mounted models are powder coated.
- Roof mounted models with removable discharge cowl.
- Units can be mounted vertically or horizontally.
- Top or bottom access options available
- Bottom inlet also available on request



Acoustic lining to reduce noise breakout

- Units are lined with 20mm Barafoam "O" class liner.
- A 6mm barrier mat layer is incorporated in the liner
- This significantly reduces noise breakout

Energy Saving Controls

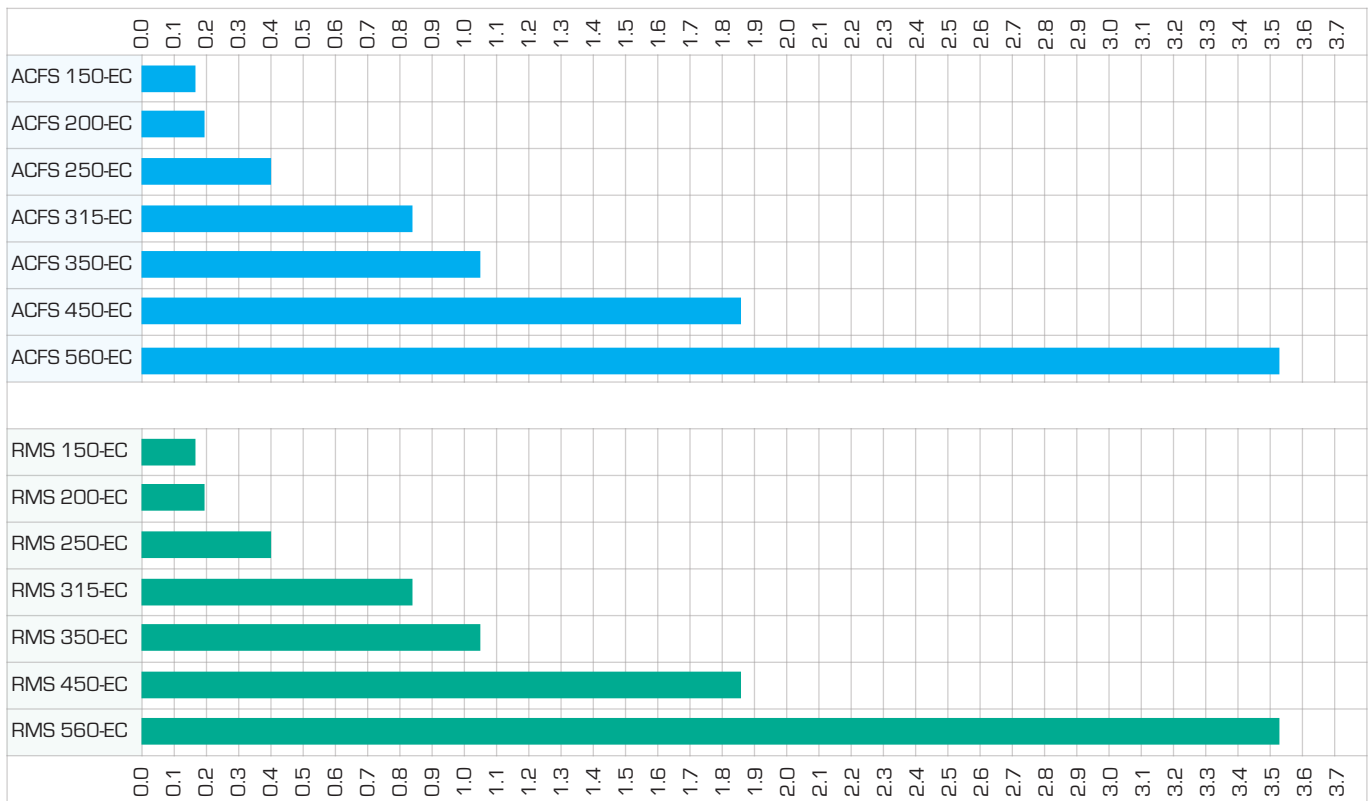
- All units are fitted with pre-wired controls (available with no controls at special request)
- Designed to work with BMS systems as below:
 - Fault Out
 - VFC Enable
 - VFC Boost
 - Remote speed control

Accessories

- Silencers
- Powder coated silencers
- Filter boxes
- AV mounts
- Duct clamps



Maximum Air Volume (m³/sec)

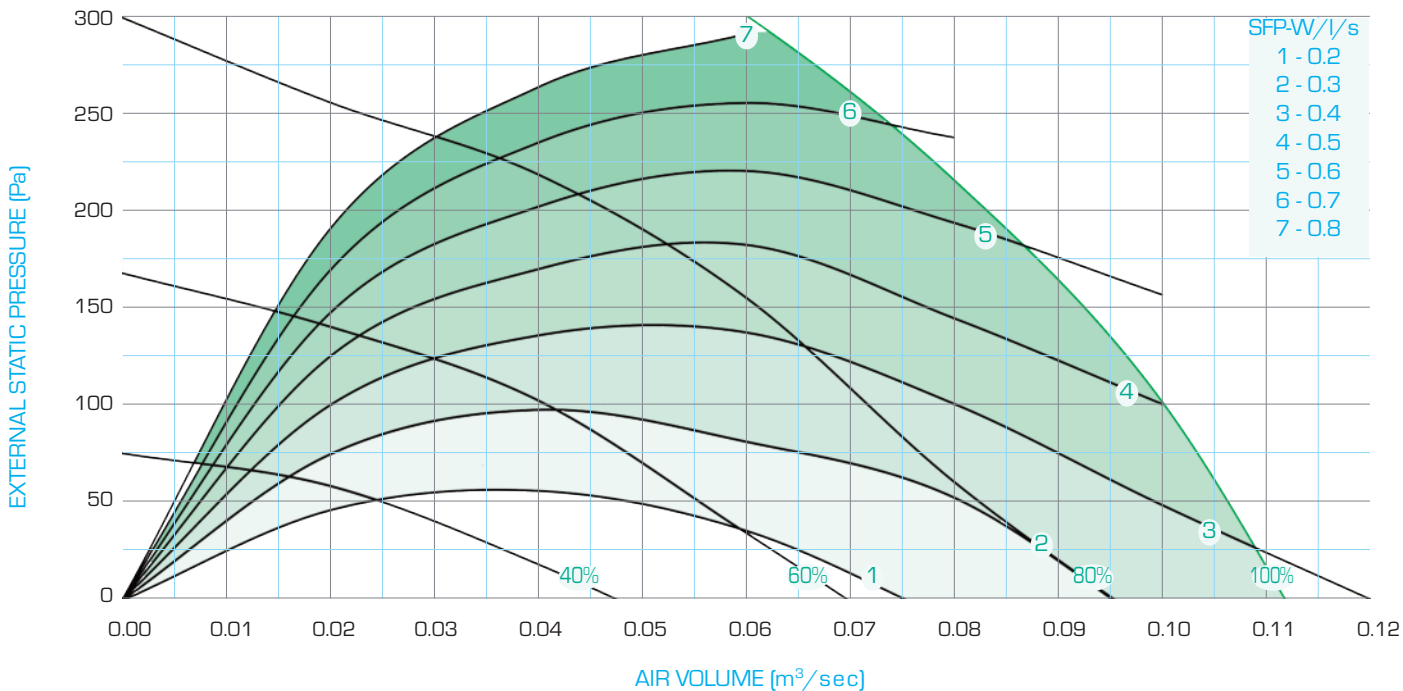


Acoustic Cabinet Fans - Single - ACFS-EC



TECHNICAL DATA - ACFS 150-EC - plant models

FAN SPEED



ELECTRICAL DATA	MODEL	FAN POWER W	SUPPLY	FLC amps
	ACFS 150-EC	52	230V 1Ph	0.40

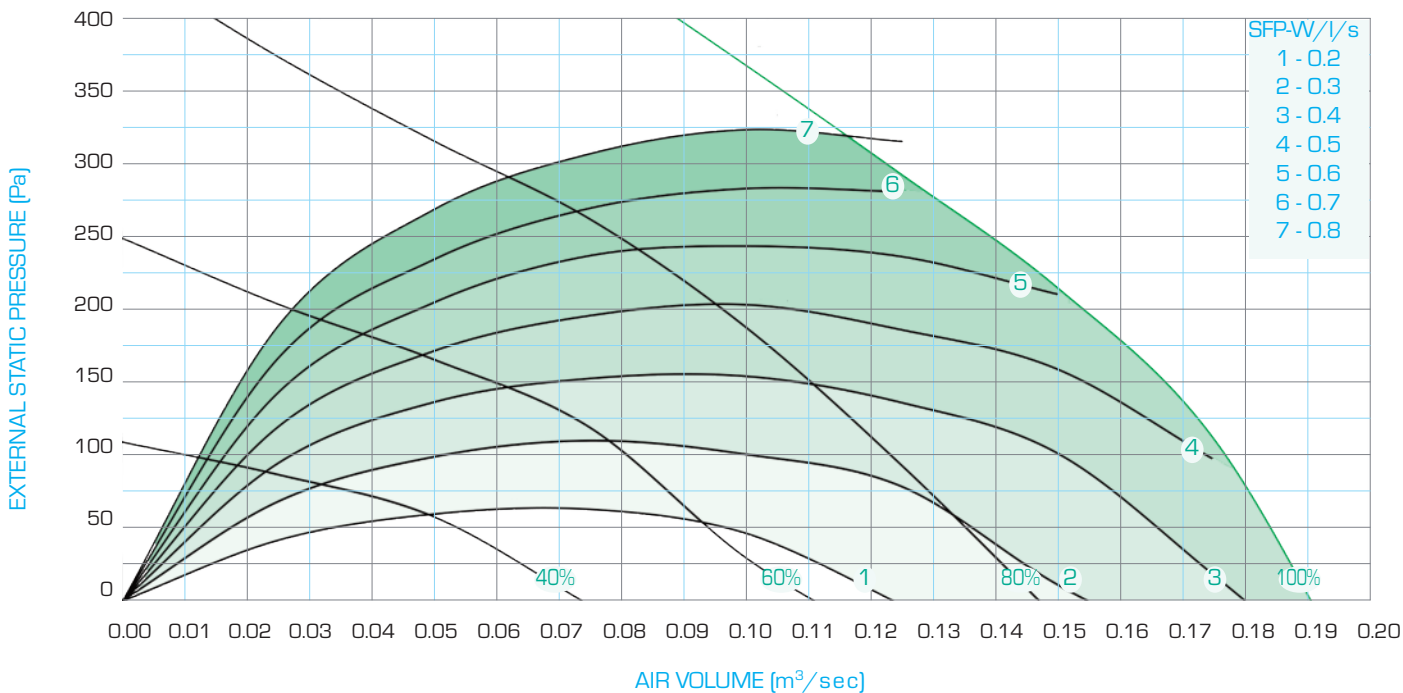
ACFS 150-EC		Mid Octave Frequency band / Hz								Total in Duct		Breakout @ 1m		Breakout @ 3m	
		63	125	250	500	1k	2k	4k	8k	dB	dB(A)	dB(A)	NR	dB(A)	NR
0.083m³/sec @ 200 Pa 100%	Inlet in duct dB	57	61	63	64	61	59	61	51	70	67	39	34	29	24
	Outlet in duct dB	62	66	68	69	66	64	66	56	75	72				
0.061m³/sec @ 150 Pa 80%	Inlet in duct dB	59	58	59	59	56	54	52	42	66	62	34	29	25	19
	Outlet in duct dB	64	63	64	64	61	59	57	47	71	67				
0.041m³/sec @ 100 Pa 60%	Inlet in duct dB	55	54	54	54	50	47	43	33	61	55	29	24	20	10
	Outlet in duct dB	60	59	59	59	55	52	49	38	66	61				
0.024m³/sec @ 50 Pa 40%	Inlet in duct dB	48	48	46	46	42	38	32	20	54	47	22	16	12	6
	Outlet in duct dB	53	53	51	51	47	43	37	25	59	52				

Acoustic Cabinet Fans - Single - ACFS-EC



TECHNICAL DATA - ACFS 200-EC - plant models

FAN SPEED



ELECTRICAL DATA	MODEL	FAN POWER W	SUPPLY	FLC amps
	ACFS 200-EC	70	230V 1Ph	0.55

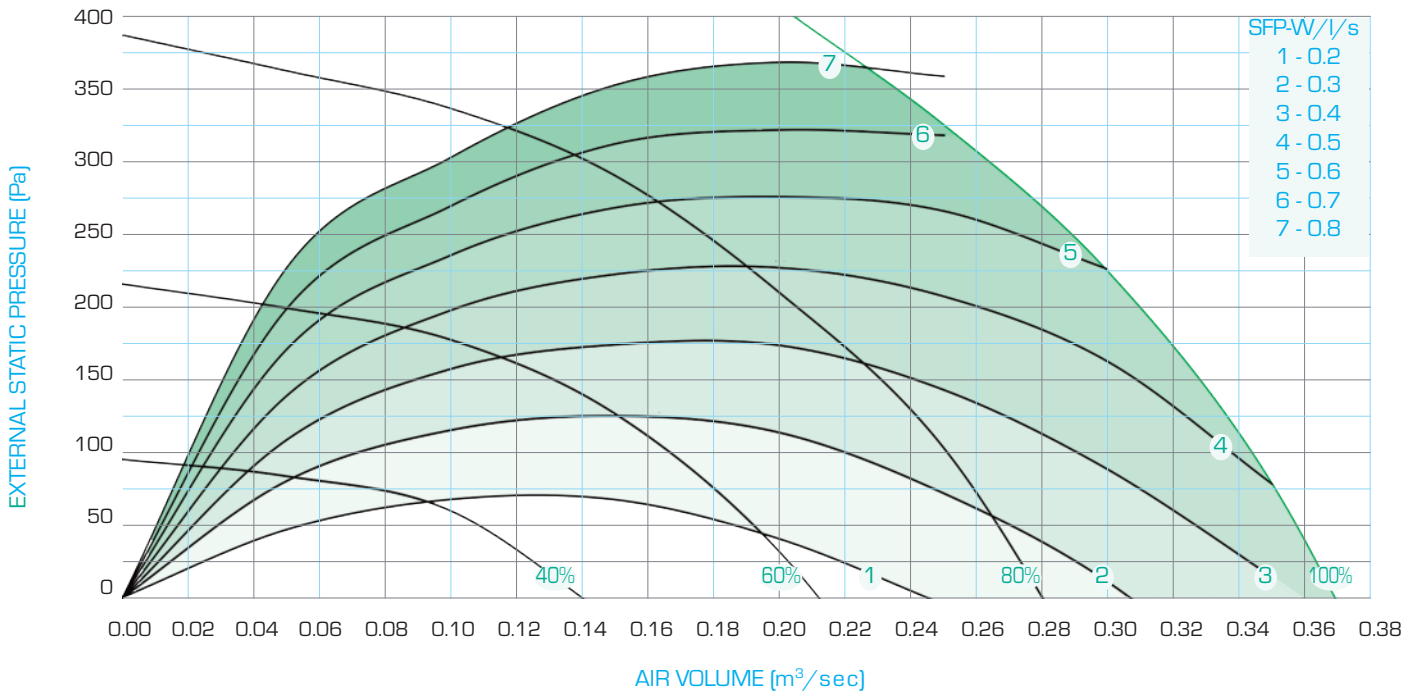
ACFS 200-EC		Mid Octave Frequency band / Hz								Total in Duct		Breakout @ 1m		Breakout @ 3m	
		63	125	250	500	1k	2k	4k	8k	dB	dB(A)	dB(A)	NR	dB(A)	NR
0.153m³/sec @ 200 Pa 100%	Inlet in duct dB	54	58	60	61	61	61	57	55	68	67	37	31	27	21
	Outlet in duct dB	59	63	65	66	66	66	62	60	72	72				
0.110m³/sec @ 150 Pa 80%	Inlet in duct dB	49	52	54	55	55	54	50	48	62	60	31	25	21	15
	Outlet in duct dB	54	57	59	60	60	59	55	61	68	66				
0.080m³/sec @ 100 Pa 60%	Inlet in duct dB	45	47	48	49	49	48	42	36	66	54	25	19	15	9
	Outlet in duct dB	50	52	53	54	54	53	47	41	61	59				
0.053m³/sec @ 50 Pa 40%	Inlet in duct dB	34	39	39	41	40	39	32	24	47	45	16	10	7	1
	Outlet in duct dB	43	45	44	46	45	44	37	29	53	50				

Acoustic Cabinet Fans - Single - ACFS-EC



TECHNICAL DATA - ACFS 250-EC - plant models

FAN SPEED



ELECTRICAL DATA	MODEL	FAN POWER W	SUPPLY	FLC amps
	ACFS 250-EC	170	230V 1Ph	1.4

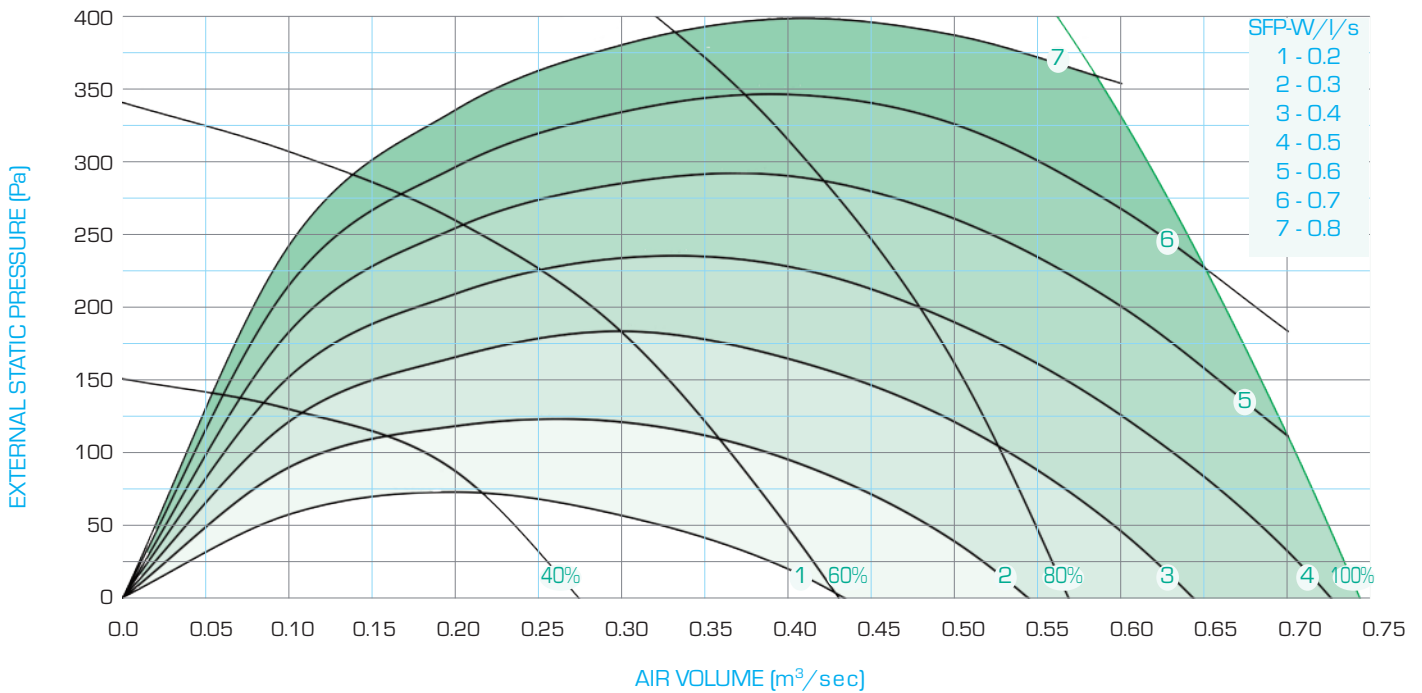
ACFS 250-EC		Mid Octave Frequency band / Hz								Total in Duct		Breakout @ 1m		Breakout @ 3m	
		63	125	250	500	1k	2k	4k	8k	dB	dB(A)	dB(A)	NR	dB(A)	NR
0.31m³/sec @ 200 Pa 100%	Inlet in duct dB	61	65	65	64	64	63	62	55	72	70	41	36	31	25
	Outlet in duct dB	66	71	70	69	69	68	67	60	77	75				
0.23m³/sec @ 150 Pa 80%	Inlet in duct dB	56	60	58	58	58	56	54	45	66	63	35	28	25	18
	Outlet in duct dB	61	65	63	63	63	61	59	50	71	68				
0.165m³/sec @ 100 Pa 60%	Inlet in duct dB	51	54	51	51	51	49	45	34	59	55	28	21	18	11
	Outlet in duct dB	56	59	56	56	56	54	50	39	64	60				
0.105m³/sec @ 50 Pa 40%	Inlet in duct dB	43	46	42	42	42	39	33	21	51	46	19	12	9	2
	Outlet in duct dB	48	51	47	47	47	44	38	26	56	51				

Acoustic Cabinet Fans - Single - ACFS-EC



TECHNICAL DATA - ACFS 315-EC - plant models

FAN SPEED



ELECTRICAL DATA	MODEL	FAN POWER W	SUPPLY	FLC amps
		ACFS 315-EC	510	230V 1Ph

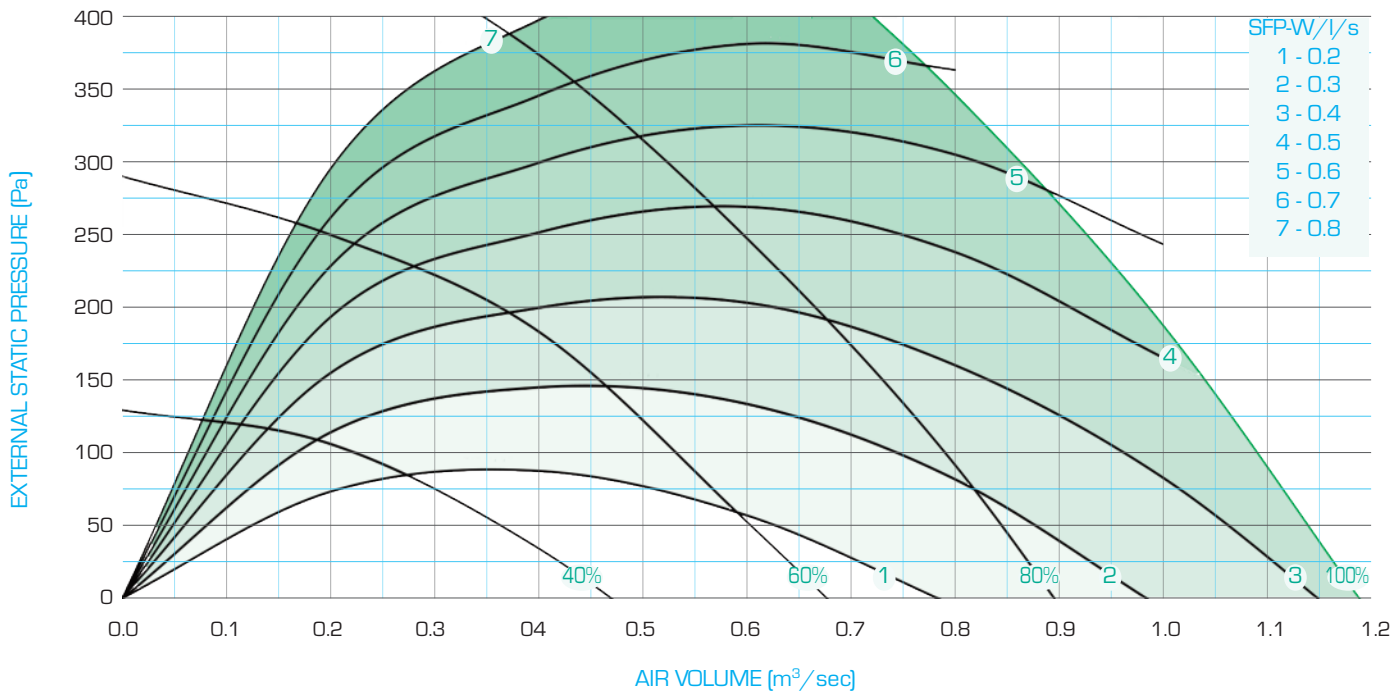
ACFS 315-EC		Mid Octave Frequency band / Hz								Total in Duct		Breakout @ 1m		Breakout @ 3m	
		63	125	250	500	1k	2k	4k	8k	dB	dB(A)	dB(A)	NR	dB(A)	NR
0.66m ³ /sec @ 200 Pa 100%	Inlet in duct dB	66	71	79	76	75	72	70	63	83	80	53	51	43	40
	Outlet in duct dB	71	76	84	81	80	77	75	69	88	85				
0.51m ³ /sec @ 150 Pa 80%	Inlet in duct dB	61	66	72	70	69	65	63	54	76	73	46	43	37	33
	Outlet in duct dB	66	71	77	75	74	70	68	59	81	78				
0.36m ³ /sec @ 100 Pa 60%	Inlet in duct dB	55	61	64	62	60	58	54	44	69	65	38	34	29	24
	Outlet in duct dB	60	66	69	67	65	63	59	49	74	70				
0.23m ³ /sec @ 50 Pa 40%	Inlet in duct dB	48	53	54	51	50	47	42	29	59	55	28	24	19	13
	Outlet in duct dB	53	58	59	56	55	52	47	34	64	60				

Acoustic Cabinet Fans - Single - ACFS-EC



TECHNICAL DATA - ACFS 350-EC - plant models

FAN SPEED



ELECTRICAL DATA	MODEL	FAN POWER W	SUPPLY	FLC amps
	ACFS 350-EC	450	230V 1Ph	2.90

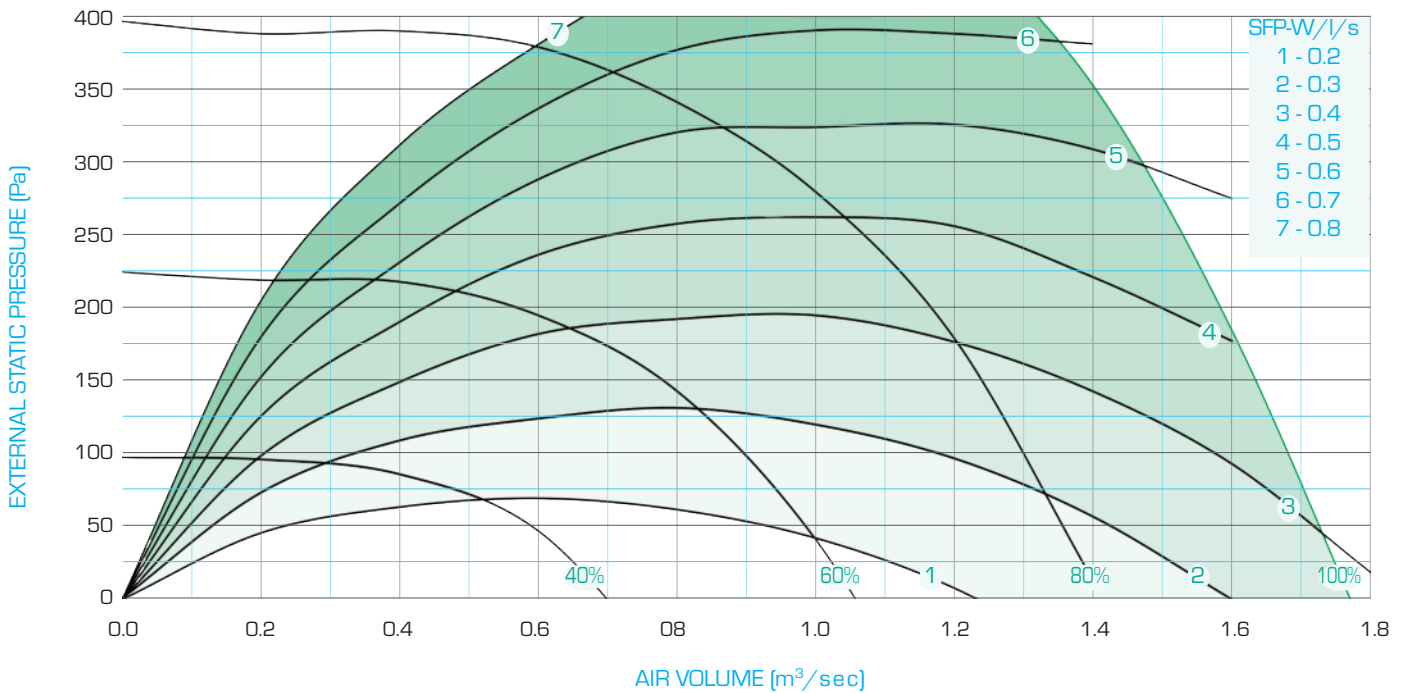
ACFS 350-EC		Mid Octave Frequency band / Hz								Total in Duct		Breakout @ 1m		Breakout @ 3m	
		63	125	250	500	1k	2k	4k	8k	dB	dB(A)	dB(A)	NR	dB(A)	NR
0.97m³/sec @ 200 Pa 100%	Inlet in duct dB	66	70	74	71	65	65	67	54	85	80	48	45	38	35
	Outlet in duct dB	71	75	79	76	70	70	72	59	88	83				
0.72m³/sec @ 150 Pa 80%	Inlet in duct dB	61	65	68	64	58	57	56	44	79	74	41	39	32	28
	Outlet in duct dB	66	70	73	69	63	62	63	49	82	77				
0.53m³/sec @ 100 Pa 60%	Inlet in duct dB	57	61	62	57	51	50	48	33	70	65	35	32	26	22
	Outlet in duct dB	62	66	67	62	56	55	53	38	73	68				
0.36m³/sec @ 50 Pa 40%	Inlet in duct dB	50	54	54	48	43	41	38	21	57	52	27	24	18	13
	Outlet in duct dB	55	59	59	53	48	46	43	26	60	55				

Acoustic Cabinet Fans - Single - ACFS-EC



TECHNICAL DATA - ACFS 450-EC - plant models

FAN SPEED



ELECTRICAL DATA	MODEL	FAN POWER W	SUPPLY	FLC amps
	ACFS 450-EC	1010	400V 3Ph	1.60

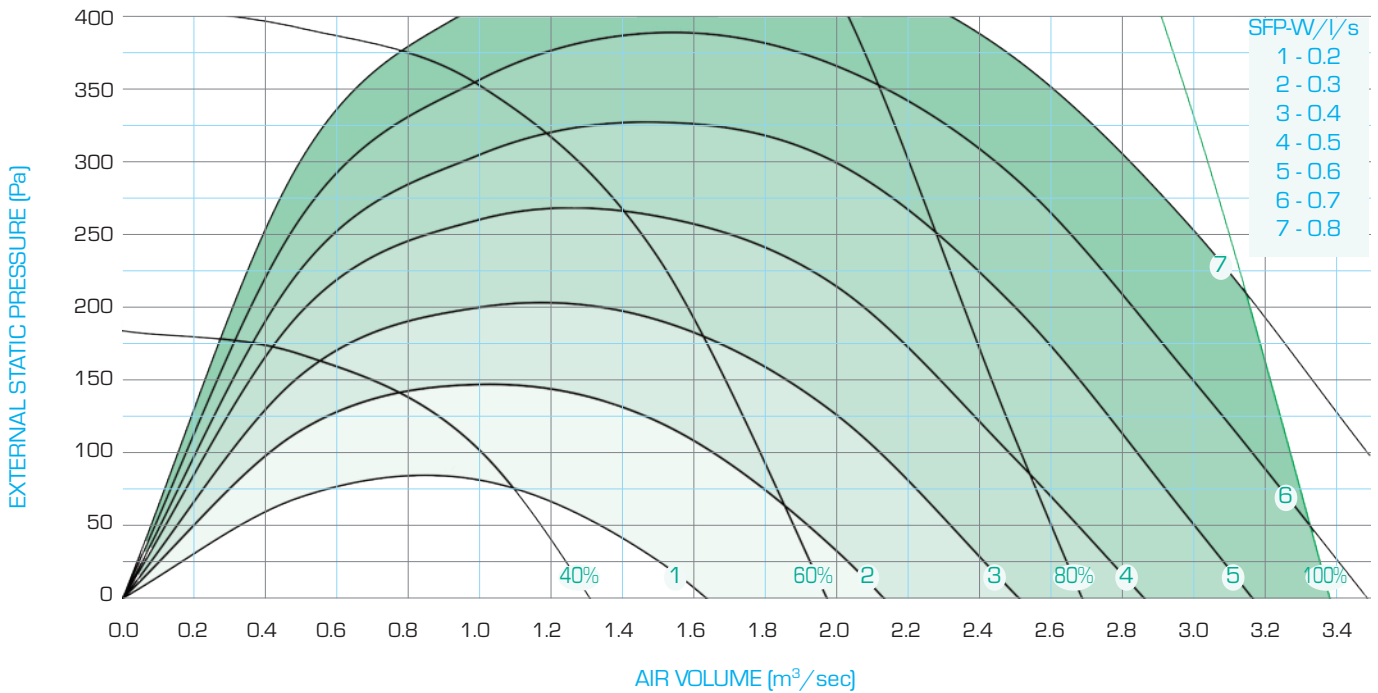
ACFS 450-EC		Mid Octave Frequency band / Hz								Total in Duct		Breakout @ 1m		Breakout @ 3m	
		63	125	250	500	1k	2k	4k	8k	dB	dB(A)	dB(A)	NR	dB(A)	NR
1.58m³/sec @ 200 Pa 100%	Inlet in duct dB	67	75	74	74	69	72	62	56	81	77	49	45	39	35
	Outlet in duct dB	70	76	74	77	80	79	68	60	85	84				
1.23m³/sec @ 150 Pa 80%	Inlet in duct dB	63	69	68	68	63	66	56	57	75	71	43	39	33	29
	Outlet in duct dB	65	71	68	71	74	72	61	52	77	79				
0.90m³/sec @ 100 Pa 60%	Inlet in duct dB	58	62	61	61	56	58	47	37	68	63	35	31	26	21
	Outlet in duct dB	60	64	61	64	66	64	53	42	71	69				
0.60m³/sec @ 50 Pa 40%	Inlet in duct dB	51	54	51	51	46	48	36	24	59	53	26	22	17	12
	Outlet in duct dB	53	58	51	54	57	55	42	29	63	60				

Acoustic Cabinet Fans - Single - ACFS-EC



TECHNICAL DATA - ACFS 560-EC - plant models

FAN SPEED



ELECTRICAL DATA	MODEL	FAN POWER W	SUPPLY	FLC amps
	ACFS 560-EC	3100	400V 3Ph	4.90

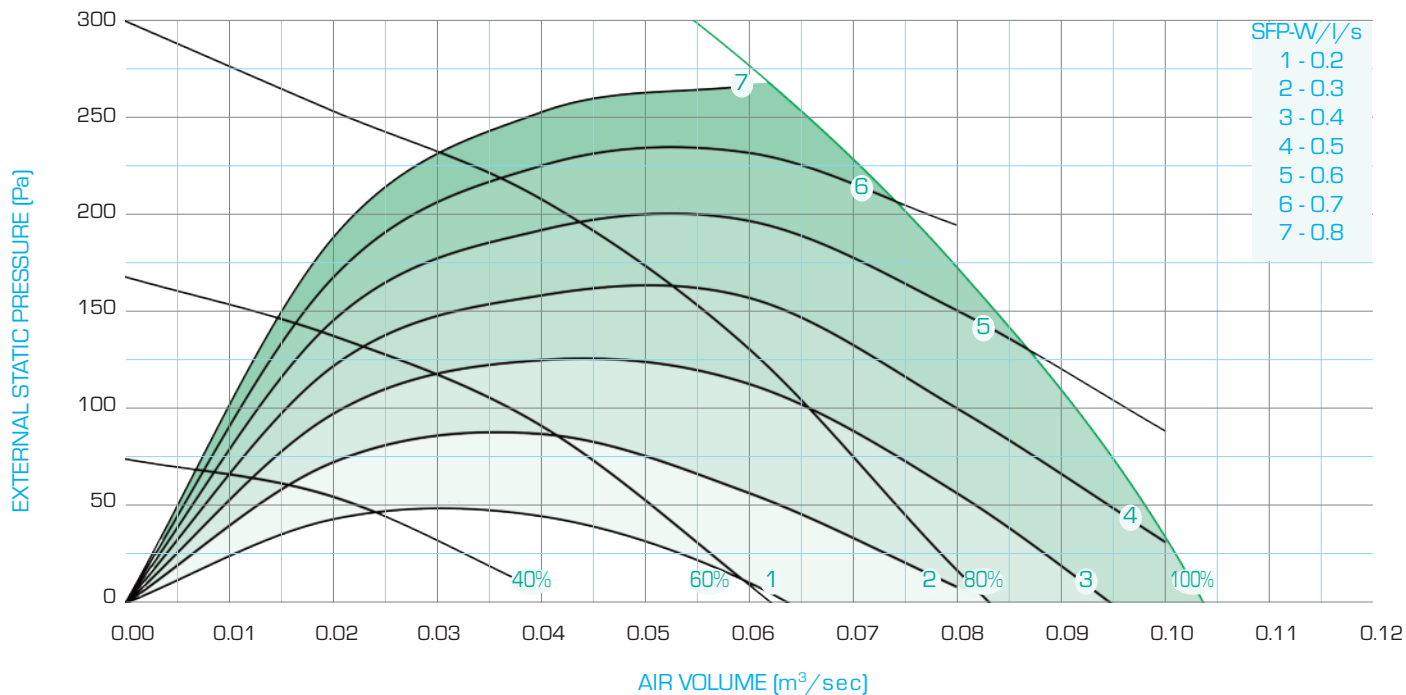
ACFS 560-EC		Mid Octave Frequency band / Hz								Total in Duct		Breakout @ 1m		Breakout @ 3m	
		63	125	250	500	1k	2k	4k	8k	dB	dB(A)	dB(A)	NR	dB(A)	NR
3.14m³/sec @ 200 Pa 100%	Inlet in duct dB	72	76	83	80	77	82	76	81	89	87	57	52	47	42
	Outlet in duct dB	75	78	84	86	87	87	82	82	93	92				
2.44m³/sec @ 150 Pa 80%	Inlet in duct dB	69	75	77	75	72	74	72	68	83	80	51	46	41	36
	Outlet in duct dB	71	76	77	80	81	80	75	71	87	86				
1.78m³/sec @ 100 Pa 60%	Inlet in duct dB	65	67	69	66	65	65	63	56	75	71	42	38	33	28
	Outlet in duct dB	67	69	69	71	73	71	66	60	79	77				
1.16m³/sec @ 50 Pa 40%	Inlet in duct dB	63	59	59	56	56	55	46	41	67	61	33	29	23	19
	Outlet in duct dB	64	60	59	61	64	58	49	43	69	66				

Acoustic Cabinet Fans - Single - RMS-EC



TECHNICAL DATA - RMS 150-EC - roof mounted

FAN SPEED



ELECTRICAL DATA	MODEL	FAN POWER W	SUPPLY	FLC amps
	RMS 150-EC	52	230V 1Ph	0.40

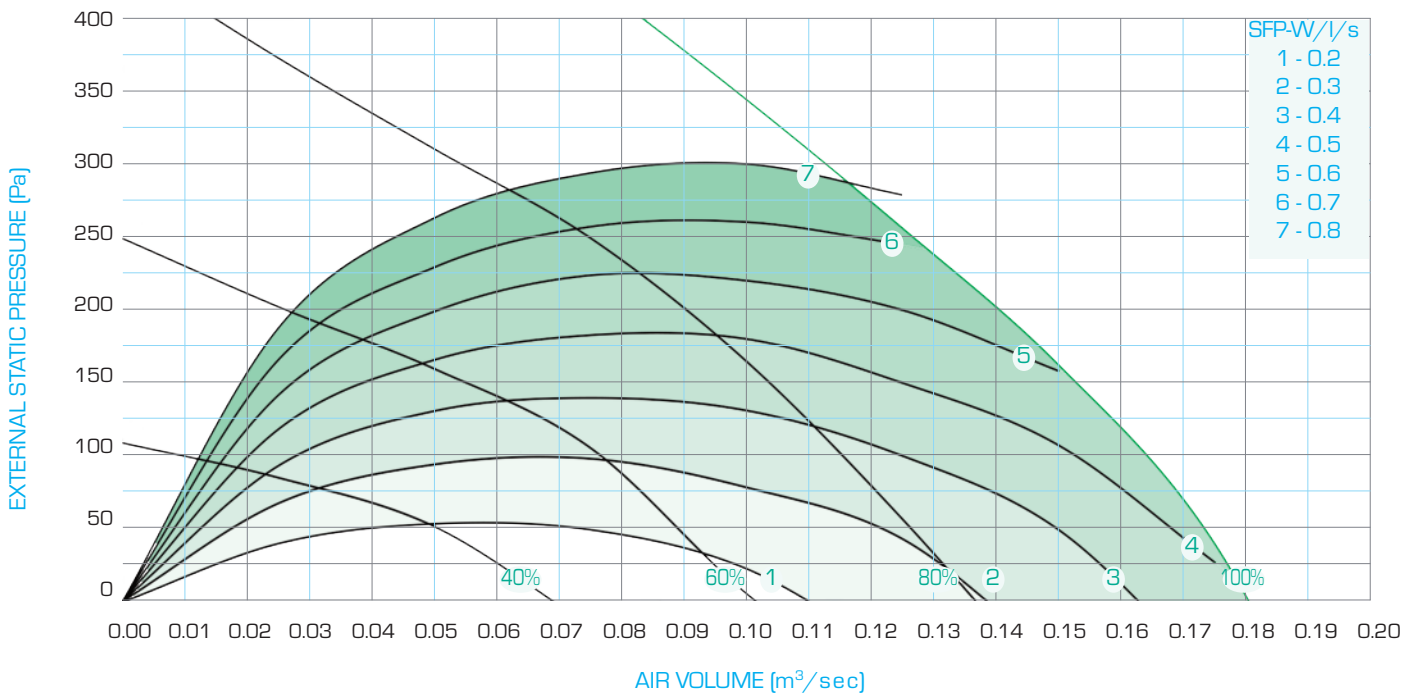
RMS 150-EC		Mid Octave Frequency band / Hz								Total in Duct		Breakout @ 1m		Breakout @ 3m	
		63	125	250	500	1k	2k	4k	8k	dB	dB(A)	dB(A)	NR	dB(A)	NR
0.075m³/sec @ 200 Pa 100%	Inlet in duct dB	64	62	64	64	61	59	58	49	71	67	39	34	30	24
	Outlet in duct dB	69	67	69	69	66	64	63	54	76	72				
0.055m³/sec @ 150 Pa 80%	Inlet in duct dB	60	60	60	60	57	54	52	42	67	62	36	30	36	20
	Outlet in duct dB	65	65	65	65	62	59	57	47	72	67				
0.037m³/sec @ 100 Pa 60%	Inlet in duct dB	54	56	55	54	51	47	43	33	62	56	30	25	21	15
	Outlet in duct dB	59	61	60	59	56	52	48	38	67	61				
0.024m³/sec @ 50 Pa 40%	Inlet in duct dB	47	49	47	46	42	38	32	19	54	47	22	16	13	6
	Outlet in duct dB	52	54	52	51	47	43	39	24	59	52				

Acoustic Cabinet Fans - Single - RMS-EC



TECHNICAL DATA - RMS 200-EC - roof mounted

FAN SPEED



ELECTRICAL DATA	MODEL	FAN POWER W	SUPPLY	FLC amps
	RMS 200-EC	70	230V 1Ph	0.55

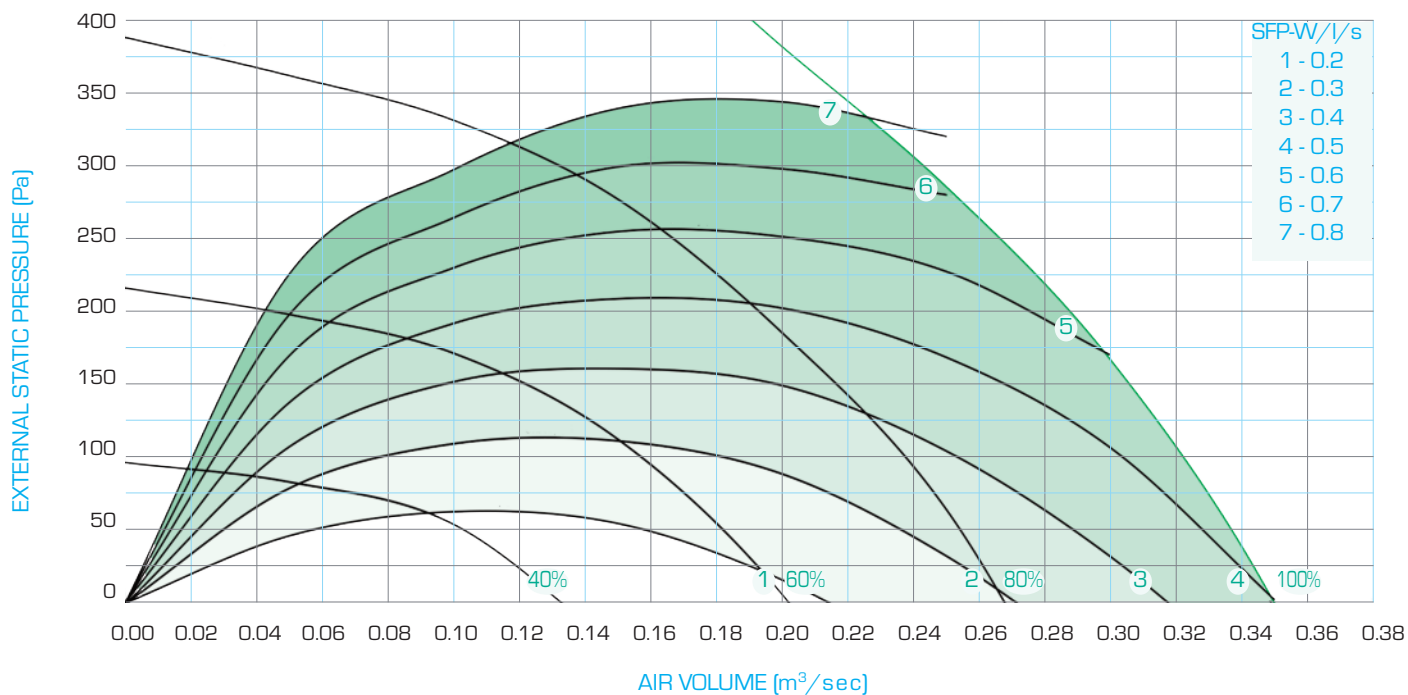
RMS 200-EC		Mid Octave Frequency band / Hz								Total in Duct		Breakout @ 1m		Breakout @ 3m	
		63	125	250	500	1k	2k	4k	8k	dB	dB(A)	dB(A)	NR	dB(A)	NR
0.140m³/sec @ 200 Pa 100%	Inlet in duct dB	54	57	59	61	60	60	57	54	67	66	36	31	27	21
	Outlet in duct dB	59	62	64	66	65	66	62	59	73	71				
0.103m³/sec @ 150 Pa 80%	Inlet in duct dB	49	53	54	56	55	54	50	46	62	60	31	26	22	16
	Outlet in duct dB	54	58	59	61	60	59	55	51	67	65				
0.077m³/sec @ 100 Pa 60%	Inlet in duct dB	45	48	49	50	49	48	43	37	56	54	25	20	16	10
	Outlet in duct dB	50	53	54	55	54	53	48	42	61	59				
0.049m³/sec @ 50 Pa 40%	Inlet in duct dB	38	40	40	41	40	39	32	23	48	45	17	10	7	1
	Outlet in duct dB	43	45	45	46	45	44	37	28	53	50				

Acoustic Cabinet Fans - Single - RMS-EC



TECHNICAL DATA - RMS 250-EC - roof mounted

FAN SPEED



ELECTRICAL DATA	MODEL	FAN POWER W	SUPPLY	FLC amps
	RMS 250-EC	170	230V 1Ph	1.40

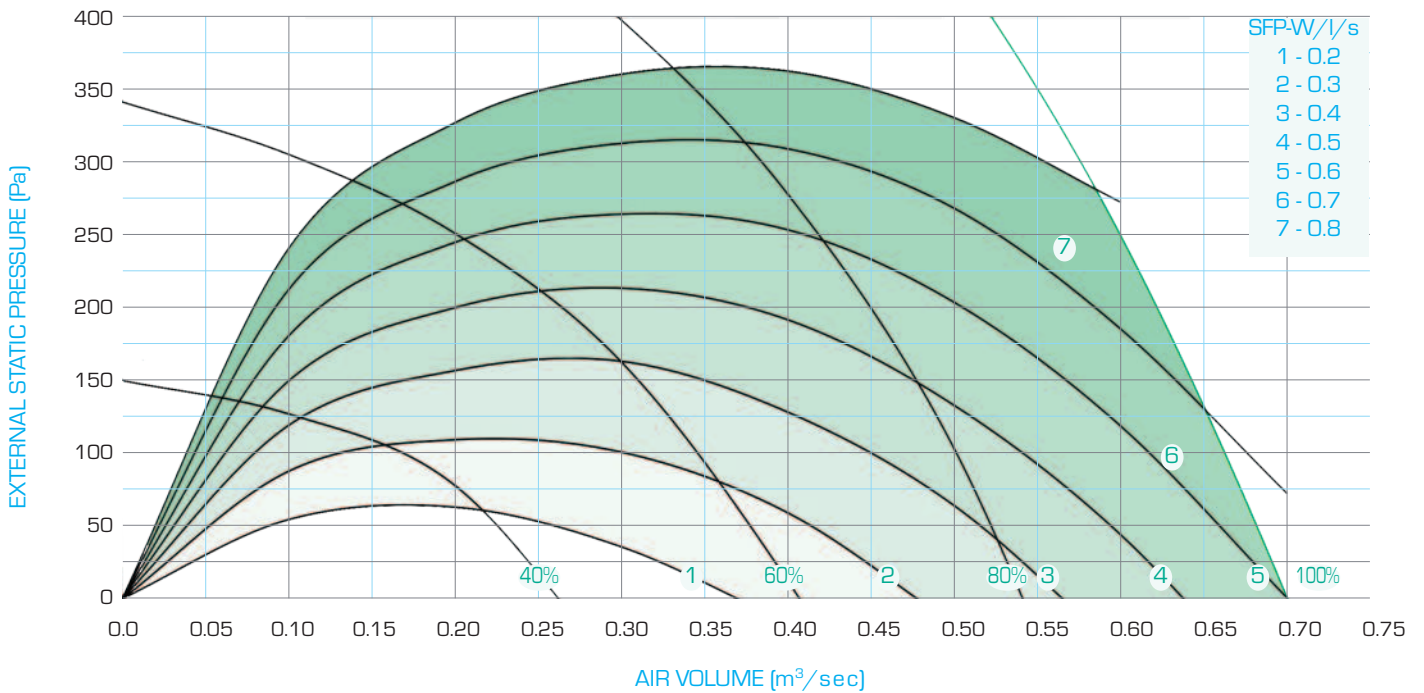
RMS 250-EC		Mid Octave Frequency band / Hz								Total in Duct		Breakout @ 1m		Breakout @ 3m	
		63	125	250	500	1k	2k	4k	8k	dB	dB(A)	dB(A)	NR	dB(A)	NR
0.285m³/sec @ 200 Pa 100%	Inlet in duct dB	60	65	64	64	63	62	60	53	71	68	40	34	31	24
	Outlet in duct dB	65	70	69	69	68	67	65	58	76	73				
0.215m³/sec @ 150 Pa 80%	Inlet in duct dB	56	59	58	58	57	55	53	44	65	62	34	28	25	18
	Outlet in duct dB	61	64	63	63	62	60	56	49	70	67				
0.155m³/sec @ 100 Pa 60%	Inlet in duct dB	52	55	55	55	54	51	47	39	62	58	31	25	21	15
	Outlet in duct dB	57	60	60	60	59	56	52	44	67	63				
0.100m³/sec @ 50 Pa 40%	Inlet in duct dB	43	45	43	42	42	39	33	21	51	46	19	12	9	2
	Outlet in duct dB	48	50	48	47	47	44	38	26	56	51				

Acoustic Cabinet Fans - Single - RMS-EC



TECHNICAL DATA - RMS 315-EC - roof mounted

FAN SPEED



ELECTRICAL DATA	MODEL	FAN POWER W	SUPPLY	FLC amps
		RMS 315-EC	510	230V 1Ph

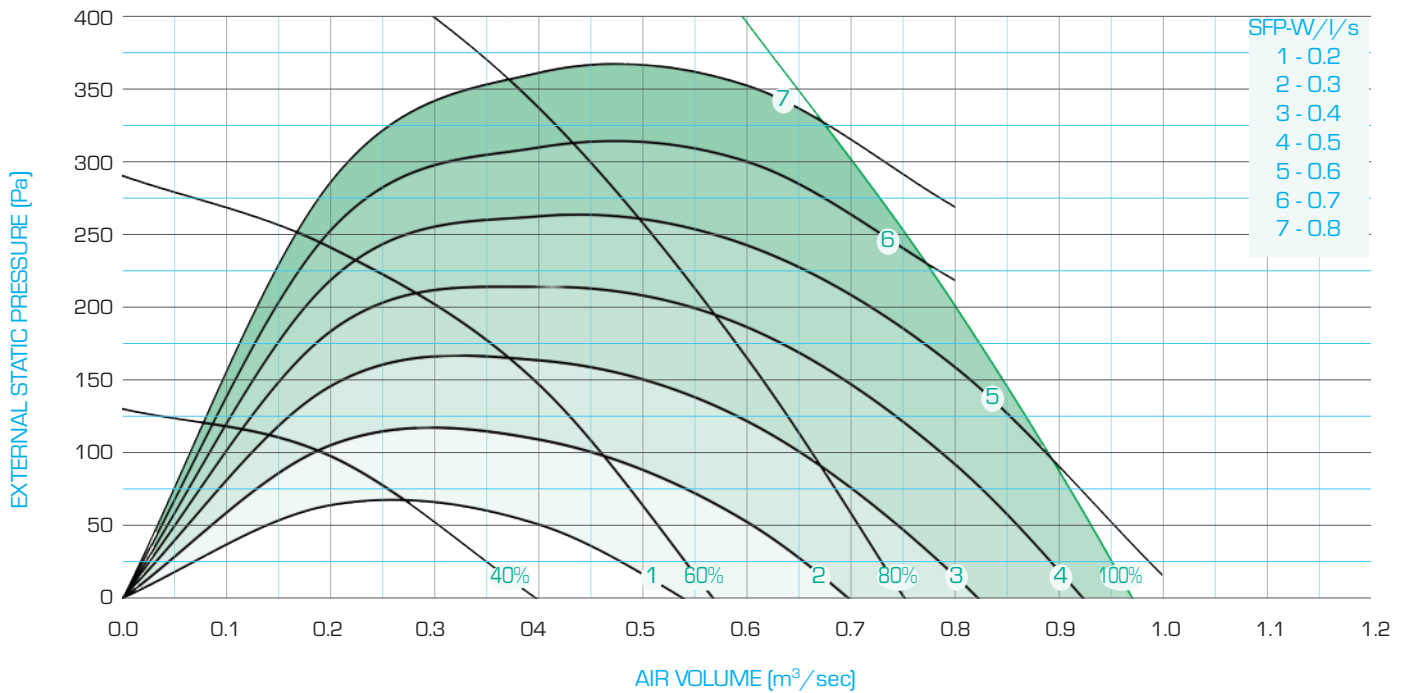
RMS 315-EC		Mid Octave Frequency band / Hz								Total in Duct		Breakout @ 1m		Breakout @ 3m	
		63	125	250	500	1k	2k	4k	8k	dB	dB(A)	dB(A)	NR	dB(A)	NR
0.62m ³ /sec @ 200 Pa 100%	Inlet in duct dB	65	71	77	75	73	71	69	62	81	78	51	48	42	38
	Outlet in duct dB	70	76	82	80	78	76	74	67	86	83				
0.47m ³ /sec @ 150 Pa 80%	Inlet in duct dB	61	66	71	68	67	64	62	54	75	72	45	42	35	32
	Outlet in duct dB	66	71	76	73	72	69	67	59	80	77				
0.34m ³ /sec @ 100 Pa 60%	Inlet in duct dB	56	61	63	61	60	58	54	44	68	65	38	33	28	23
	Outlet in duct dB	61	66	68	66	65	63	59	49	73	70				
0.22m ³ /sec @ 50 Pa 40%	Inlet in duct dB	49	53	53	51	50	48	43	30	59	55	28	23	18	12
	Outlet in duct dB	54	58	58	56	55	53	48	35	64	60				

Acoustic Cabinet Fans - Single - RMS-EC



TECHNICAL DATA - RMS 350-EC - roof mounted

FAN SPEED



ELECTRICAL DATA	MODEL	FAN POWER W	SUPPLY	FLC amps
		RMS 350-EC	450	230V 1Ph

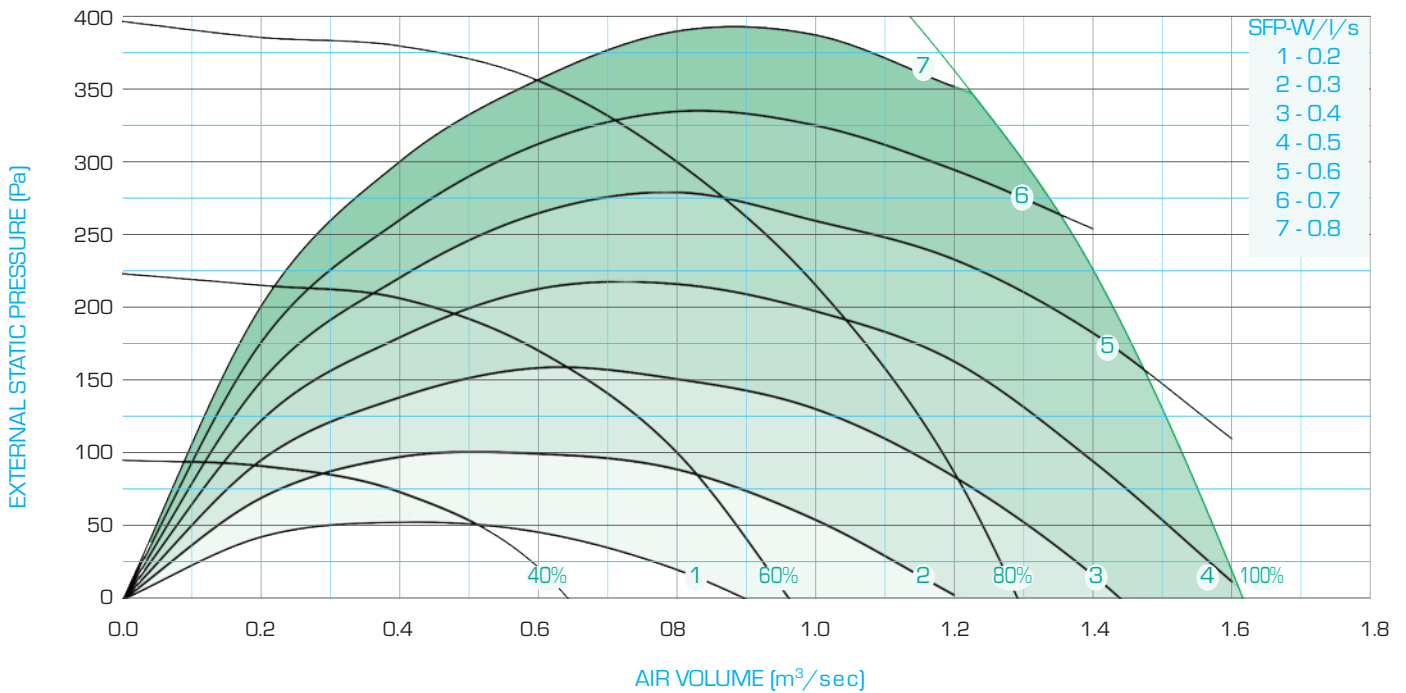
RMS 350-EC		Mid Octave Frequency band / Hz								Total in Duct		Breakout @ 1m		Breakout @ 3m	
		63	125	250	500	1k	2k	4k	8k	dB	dB(A)	dB(A)	NR	dB(A)	NR
0.80m³/sec @ 200 Pa 100%	Inlet in duct dB	65	73	71	67	62	61	60	50	76	70	45	42	36	32
	Outlet in duct dB	70	78	76	72	67	66	65	55	81	75				
0.61m³/sec @ 150 Pa 80%	Inlet in duct dB	61	69	65	62	57	56	52	42	72	64	41	36	31	25
	Outlet in duct dB	66	75	70	67	62	61	57	47	77	69				
0.46m³/sec @ 100 Pa 60%	Inlet in duct dB	56	65	59	56	51	49	45	34	67	58	35	30	26	19
	Outlet in duct dB	61	70	64	61	56	54	50	39	72	63				
0.30m³/sec @ 50 Pa 40%	Inlet in duct dB	49	58	50	46	42	39	33	20	59	49	27	22	18	11
	Outlet in duct dB	54	63	55	51	47	44	38	25	64	54				

Acoustic Cabinet Fans - Single - RMS-EC



TECHNICAL DATA - RMS 450-EC - roof mounted

FAN SPEED



ELECTRICAL DATA	MODEL	FAN POWER W	SUPPLY	FLC amps
	RMS 450-EC	1010	400V 3Ph	1.60

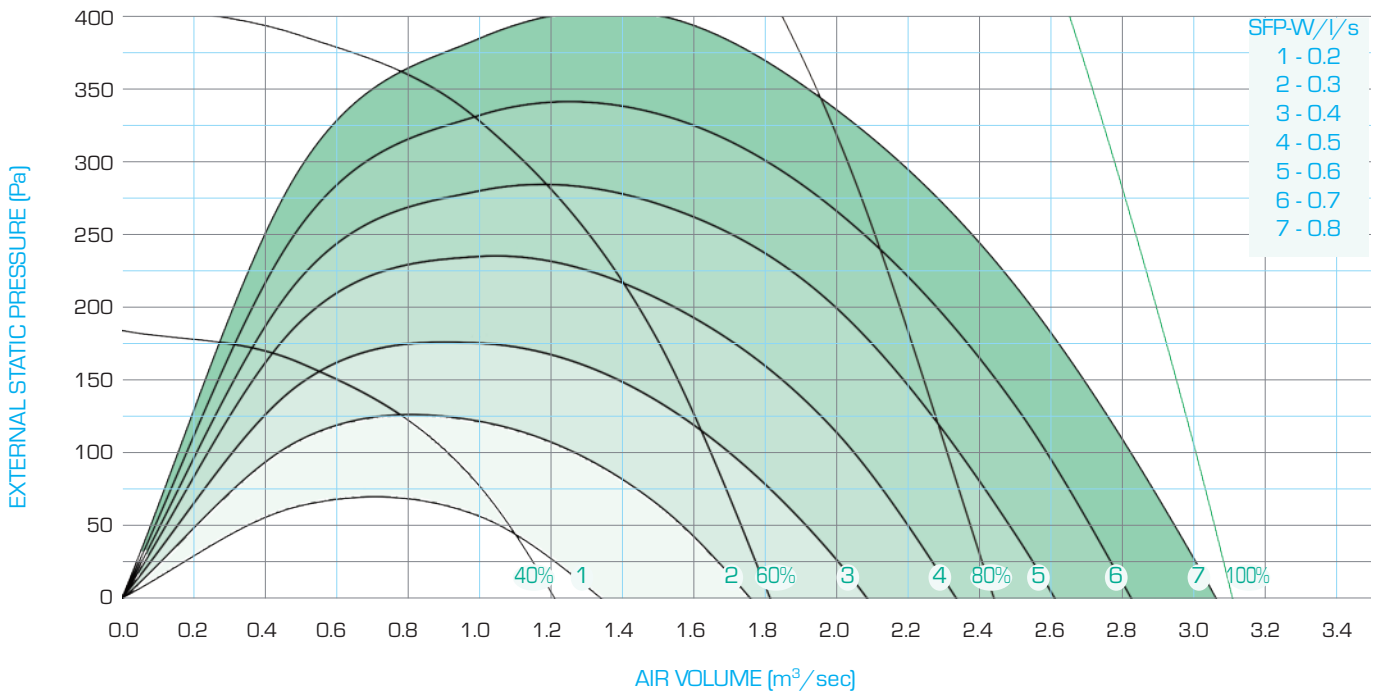
RMS 450-EC		Mid Octave Frequency band / Hz								Total in Duct		Breakout @ 1m		Breakout @ 3m	
		63	125	250	500	1k	2k	4k	8k	dB	dB(A)	dB(A)	NR	dB(A)	NR
1.43m³/sec @ 200 Pa 100%	Inlet in duct dB	67	70	71	72	66	68	61	54	77	74	46	41	36	31
	Outlet in duct dB	68	72	72	75	76	74	66	58	81	80				
1.11m³/sec @ 150 Pa 80%	Inlet in duct dB	63	66	66	66	61	62	55	46	72	68	40	36	31	26
	Outlet in duct dB	64	68	66	69	71	69	61	51	76	75				
0.88m³/sec @ 100 Pa 60%	Inlet in duct dB	58	62	60	60	56	57	49	39	67	63	35	31	26	21
	Outlet in duct dB	60	64	61	64	66	64	55	44	71	70				
0.51m³/sec @ 50 Pa 40%	Inlet in duct dB	49	53	49	48	45	46	37	23	57	51	24	20	15	10
	Outlet in duct dB	50	55	50	53	55	52	43	29	61	58				

Acoustic Cabinet Fans - Single - RMS-EC



TECHNICAL DATA - RMS 560-EC - externally mounted

FAN SPEED



ELECTRICAL DATA	MODEL	FAN POWER W	SUPPLY	FLC amps
	RMS 560-EC	3100	400V 3Ph	4.90

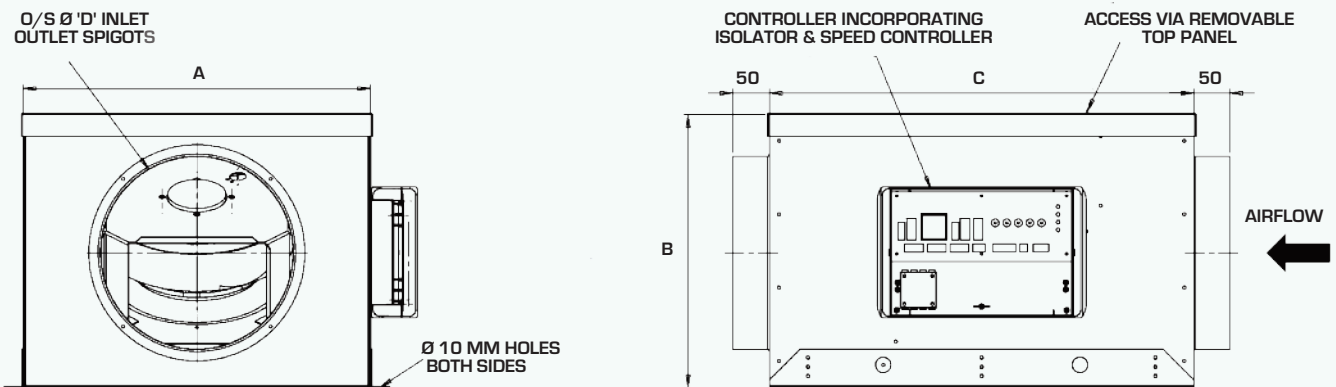
RMS 560-EC		Mid Octave Frequency band / Hz								Total in Duct		Breakout @ 1m		Breakout @ 3m	
		63	125	250	500	1k	2k	4k	8k	dB	dB(A)	dB(A)	NR	dB(A)	NR
2.88m³/sec @ 200 Pa 100%	Inlet in duct dB	70	73	82	78	76	78	74	77	86	84	55	51	45	41
	Outlet in duct dB	74	75	82	84	86	84	79	79	91	90				
2.24m³/sec @ 150 Pa 80%	Inlet in duct dB	68	73	75	73	70	71	69	65	80	77	49	44	39	34
	Outlet in duct dB	70	75	76	78	79	77	73	68	85	83				
1.64m³/sec @ 100 Pa 60%	Inlet in duct dB	62	67	68	65	64	63	61	55	73	70	41	37	32	27
	Outlet in duct dB	65	68	68	70	72	69	65	58	77	76				
1.08m³/sec @ 50 Pa 40%	Inlet in duct dB	61	58	58	56	55	54	45	40	65	60	32	28	23	18
	Outlet in duct dB	62	59	59	61	63	58	50	43	69	66				

Acoustic Cabinet Fans - Single - ACFS-EC. RMS-EC Plant and Roof



UNIT DIMENSIONS

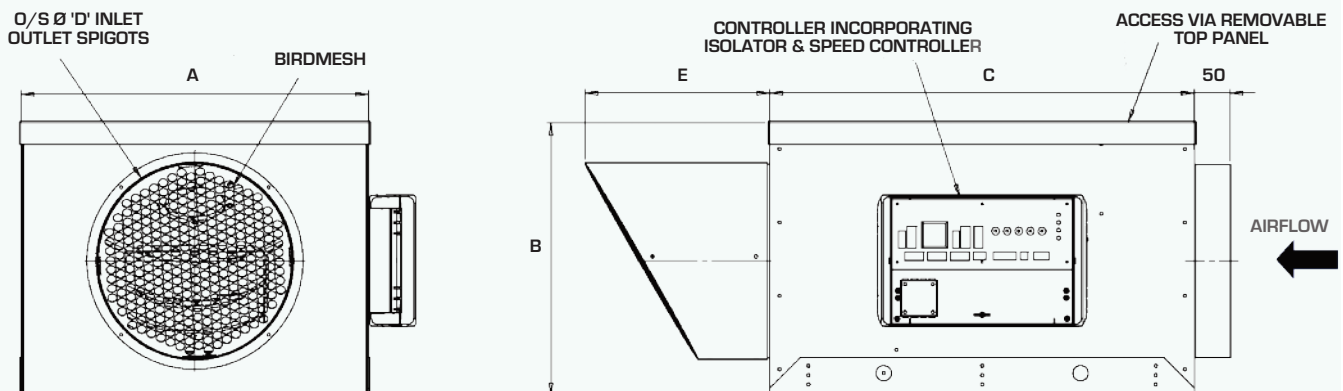
SINGLE PLANT



SINGLE INTERNAL AND EXTERNAL

Model	A	B	C	D	E	kg internal	kg external	trickle/boost	Isolator
150-EC	250	250	300	150	180	9	10	yes	yes
200-EC	350	250	400	200	210	14	15	yes	yes
250-EC	450	350	550	250	240	26	27	yes	yes
315-EC	550	400	600	310	275	32	33	yes	yes
350-EC	650	550	650	350	295	45	47	yes	yes
450-EC	750	650	975	450	350	74	80	yes	yes
560-EC	900	800	1100	560	415	114	118	yes	yes

SINGLE ROOF

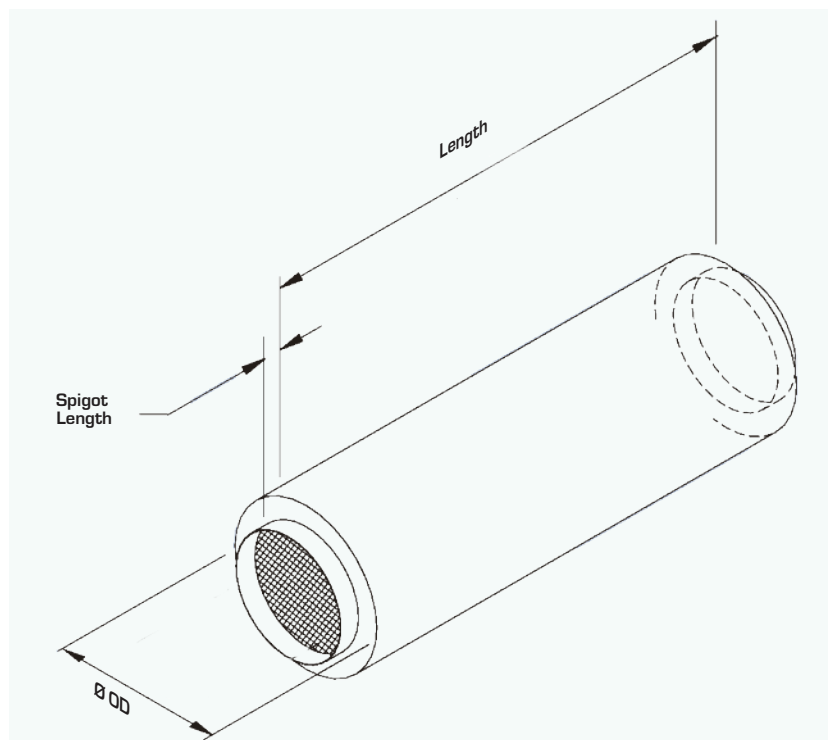


Acoustic Cabinet Fans - Single - ACFS-EC. RMS-EC Plant and Roof



ANCILLARIES - ATTENUATOR

- Circular duct attenuator
- Constructed from spiral wound, galvanised sheet steel.
- Peripheral out of airstream acoustic lining.
- Spigot connections with EPDM seals for slip jointing to adjoining ductwork



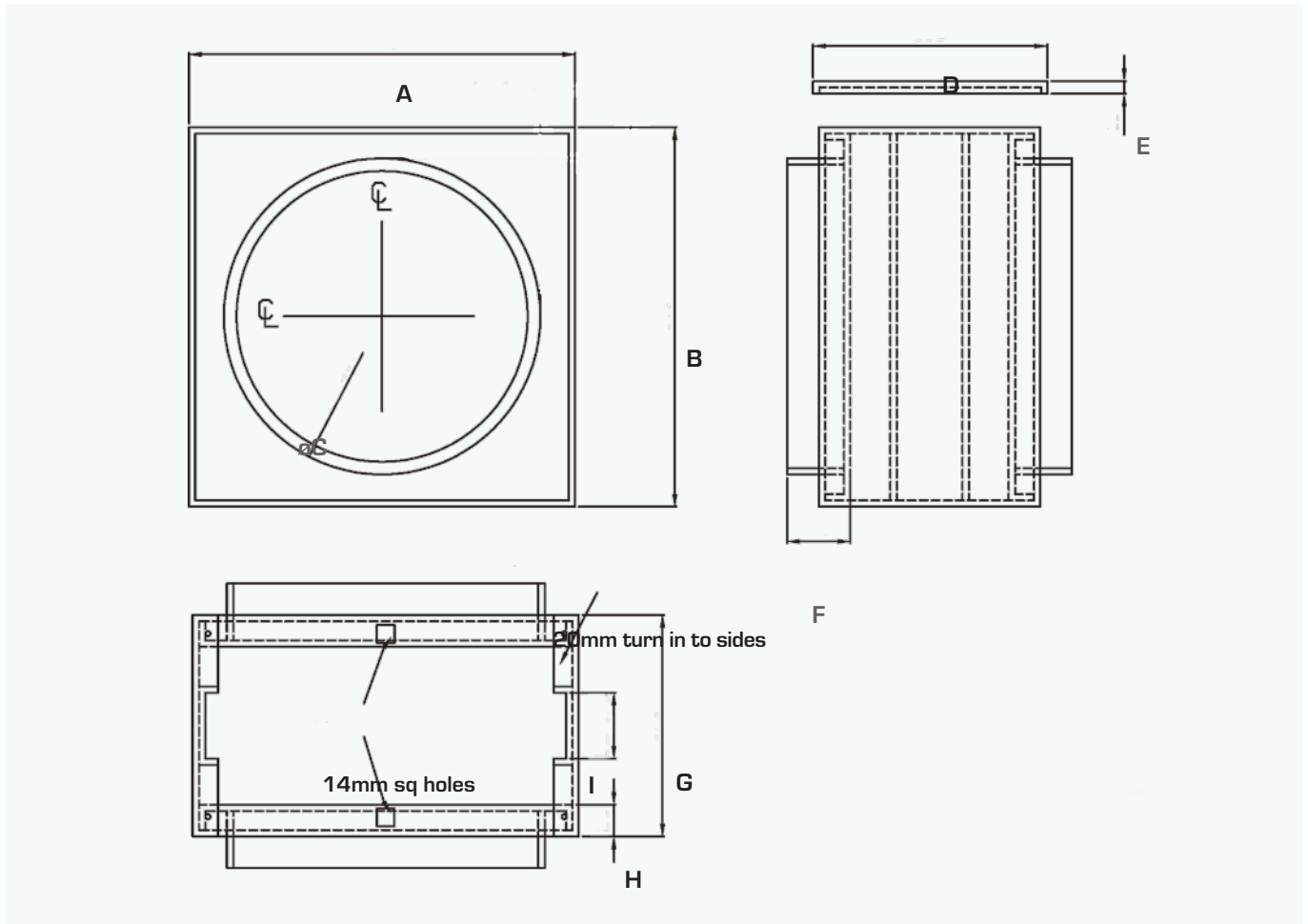
Model	Length	Spigot Length	External Diameter
SIL150	600	38	255
SIL200	600	38	305
SIL250	600	38	360
SIL315	600	38	405
SIL350	600	38	455
SIL450	600	38	565
SIL560	600	38	605
SIL150/90	900	38	255
SIL200/90	900	38	305
SIL250/90	900	38	360
SIL315/90	900	38	405
SIL350/90	900	38	455
SIL450/90	900	38	565
SIL560/90	900	38	605

Dimensions in mm

Acoustic Cabinet Fans - Single - ACFS-EC. RMS-EC Plant and Roof



ANCILLARIES - FILTER BOX WITH G3 FILTER



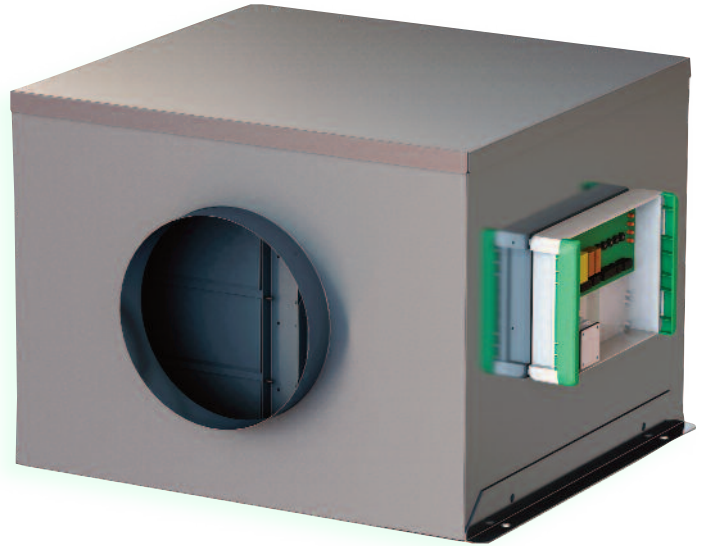
Model	A	B	øC	D	E	F	G	H	I
FUV150	204	198	150	185	10	50	175	25	52i/s
FUV200	254	249	200	185	10	50	175	25	52i/s
FUV250	305	300	250	185	10	50	175	25	52i/s
FUV315	350	376	315	185	10	50	175	25	52i/s
FUV350	455	450	350	210	10	50	200	25	52i/s
FUV450	500	505	450	210	10	50	200	25	52i/s
FUV560	600	605	560	210	10	50	200	25	98i/s

Dimensions in mm

Acoustic Cabinet Fans - Twin - DMTSQ-EC. RMTS-EC Plant and Roof

TWIN FAN MODELS

- Twin Fan models are available to complement the Single Fan range.
- Twin Fan Models 0.01 m³/sec to 3.22 m³/sec
- Plant and roof mounted versions.
- Acoustic lining to reduce noise breakout
- EC fans, direct drive
- Low SFP to help achieve L2 Regulations.
- Constant Pressure Controller available
- All units are fitted with pre-wired auto changeover panel saving time and money on site.
The ACOP's features comprise:
 - VFC BMS enable
 - VFC BMS boost
 - Fan fault BMS link
 - Remote 0-10V speed control
 - Duty Share (adjustable)
 - Run on timer for boost 0-20 minutes)
 - Trickle and boost setting
 - P.I.R. enabled Boost



Other Vectaire Products

Whole House Mechanical Ventilation

MVHR, MEV, dMEV



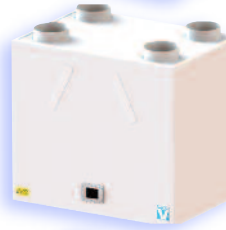
Midi & Midi BY-AT (MVHR)

- For wall or loft installation in homes and offices
- **Midi BY-AT with integral acoustic attenuation - very low noise levels**
- Summer bypass and frost-stat
- Up to 94% heat exchange efficiency - sfp from 0.50 W/l/s
- Up to 95 l/s at 50Pa - max 101 l/s capacity
- Models with integral humidistat
- Commissioned via integral LCD or remote LCD commissioning unit



Maxi & Maxi BY-AT (MVHR)

- For wall or loft installation in homes and offices
- **Maxi BY-AT with integral acoustic attenuation - very low noise levels**
- Summer bypass and frost-stat
- Up to 92% heat exchange efficiency - sfp from 0.40 W/l/s
- **Up to 163 l/s at 50Pa - max 177 l/s capacity**
- Models with integral humidistat
- Commissioned via integral LCD or remote LCD commissioning unit



MaxiPlus-BY & MaxiPlus/BY/AT (MVHR)

- For wall or loft installation in homes and offices
- **MaxiPlus/ BY/AT with integral acoustic attenuation - very low noise levels**
- Summer bypass and frost-stat
- Up to 89% heat exchange efficiency - sfp from 0.46 W/l/s
- **Up to 230 l/s at 50Pa - max 238 l/s capacity**
- Models with integral humidistat
- Commissioned via integral LCD or remote LCD commissioning unit



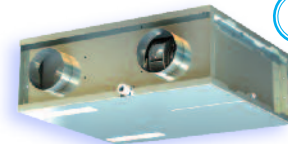
EVO200 & EVO250 (MVHR)

- For in-line installation in homes and offices
- Summer bypass and frost-stat
- Up to 94/88% heat exchange efficiency
- Up to 74/80 litre/sec at 50Pa - max 81/85 l/s capacity
- Specific Fan Power from 0.64/0.70 W/l/s
- Models with integral humidistat
- Commissioned via remote LCD commissioning unit



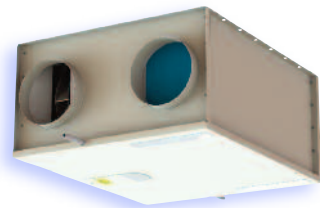
-EVO220 (MVHR)

- For in-line installation in homes and offices
- Summer bypass and frost-stat
- Up to 87% heat exchange efficiency - sfp from 0.55 W/l/s
- Up to 70 l/s at 50Pa - max 75 l/s capacity
- Models with integral humidistat
- Commissioned via remote LCD commissioning unit



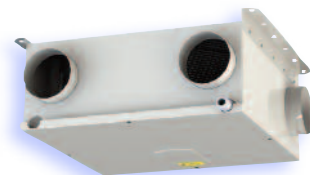
EVO350 (MVHR)

- For in-line installation in homes and offices
- Summer bypass and frost-stat
- Up to 88% heat exchange efficiency - sfp from 0.67 W/l/s
- Up to 107 l/s at 50Pa - max 116 l/s capacity
- Models with integral humidistat
- Commissioned via remote LCD commissioning unit



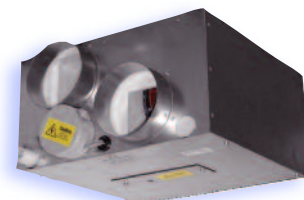
Studio (MVHR)

- For in-line installation in multi-occupancy establishments
- With and without summer bypass and frost-stat
- Up to 80% heat exchange efficiency - sfp from 0.91 W/l/s
- Up to 55 l/s at 50Pa - max 59 l/s capacity
- Models with integral humidistat
- Commissioned via remote LCD commissioning unit



Mini (MVHR)

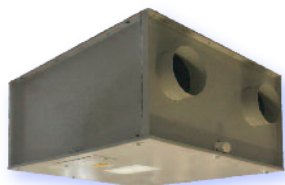
- For in-line installation in multi-occupancy establishments
- With and without summer bypass and frost-stat
- Up to 83% heat exchange efficiency - sfp from 1.11 W/l/s
- Up to 30 l/s at 50Pa - max 34 l/s capacity
- Commissioned via remote LCD commissioning unit



Other Vectaire Products

Whole House Mechanical Ventilation

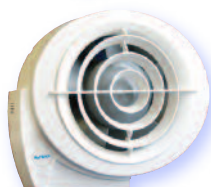
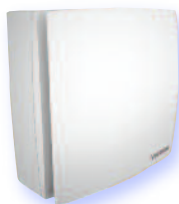
MVHR, MEV, dMEV



NEW



NEW



WVHR100/90DC-B-BY (MVHR)

- For in-line installation in homes and offices
- Summer bypass and frost-stat
- Up to 88% heat exchange efficiency - sfp from 0.63 W/l/s
- Up to 78 l/s at 50Pa - max 83 l/s capacity
- Models with integral humidistat
- Commissioned via remote LCD commissioning unit

MBOX125/2DC-B (MEV)

- For in-line installation in homes and offices
- Ultra low profile - less than 184mm deep
- Up to 97 l/s at 50Pa - max 108 l/s capacity
- sfp from 0.20 W/l/s
- Purge option factory set
- Available with 204mm x 60mm spigot
- Continuous running - choice of trickle and boost speeds

MBOX200/2DC (MEV)

- For in-line installation in homes and offices
- Up to 233 l/s at 50Pa - max 251 l/s capacity
- sfp from 0.27 W/l/s
- Purge option factory set
- Available with 220mm x 90mm spigot
- Continuous running - choice of trickle and boost speeds

Elegance (dMEV)

- Continuous running 3 speed (2 trickle speeds and boost) axial fan
- For installation in all domestic wet rooms
- Up to 26.9 litre/sec capacity - sfp from 0.09 W/l/s
- **Best SFP in Class**
- **EL100 and EL150 - AC motor versions in 100mm and 150mm dia available**

Elix (dMEV)

- Continuous running 3 speed (2 trickle speeds and boost) centrifugal fan
- EC motor for high efficiency low energy usage
- For installation in all domestic wet rooms
- Up to 28 litre/sec capacity - sfp from 0.14 W/l/s
- **Best SFP in Class**
- **ELX100 - AC motor version in 100mm dia available**

ELPREX (dMEV)

- Continuous running 4 speed (1 trickle and choice of 3 boost speeds) centrifugal fan
- Energy efficient motor
- For installation in walls and ceilings in all kitchens
- Up to 60 litre/sec capacity - sfp from 0.35 W/l/s

E-Smile (dMEV)

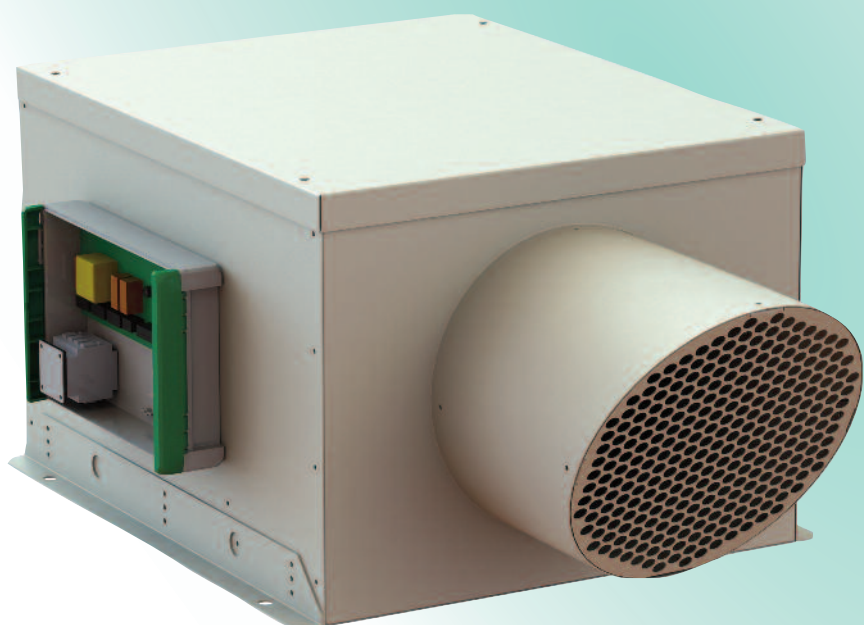
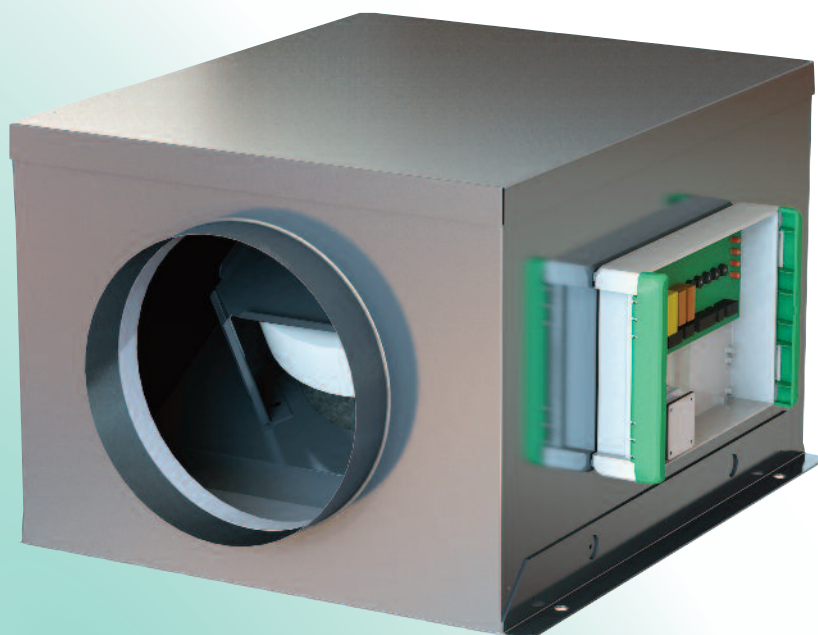
- Continuous running 3 speed (2 trickle speeds and boost) axial fan
- Up to 21 litre/sec capacity
- Specific Fan Power from 0.37 W/l/s

Heatrec1003

- **Single room heat recovery unit**
- EC motors for high efficiency low energy usage
- Recovers up to 75% of heat from extracted, polluted air
- 3 speed for any domestic wet room
- Continuous running - choice of trickle and boost speeds
- Heat exchange tube available in 3 lengths
- **With summer bypass and frost-stat**

Acoustic Cabinet Fans with EC Motors

Single Fan Models



Single Fan Models - 0.01 m³/sec to 3.55 m³/sec - EC Motors - Low SFPs

Vectaire Ltd
Lincoln Road
Cressex Business Park
High Wycombe
Buckinghamshire
HP12 3RH
Tel: +44(0)1494 522333
Fax: +44(0)1494 522337
Email: sales@vectaire.co.uk
Web: www.vectaire.co.uk

